

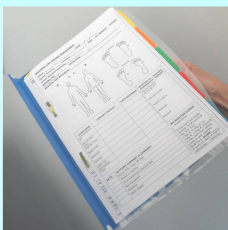
Standard ANTT

Aseptic Non Touch Technique

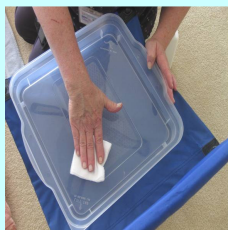
Infection Prevention Principles

Uncomplicated Wound Dressing in the Home

Prepare Well



Consult client care record to inform wound care^{1,2}



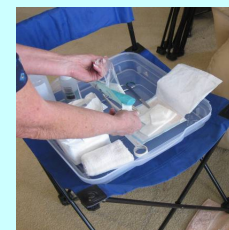
With clean hands⁴ clean your work space



Gather necessary equipment^{2,3,5} and waste bag/container⁹



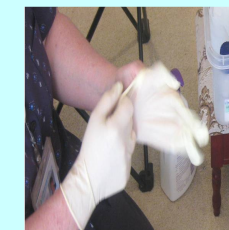
Perform hand hygiene⁴



Prepare equipment⁵ and work space. Ensure you have a bag/container open for waste⁹

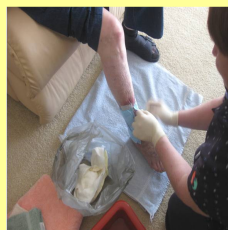


Perform hand hygiene⁴



Put on non-sterile gloves^{6,7}
If further PPE is required put on before gloves⁶

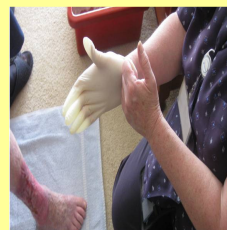
Perform ANTT



Ensuring there is a clean towel or drape under the wound, remove old dressing and place into waste bag/ container⁹



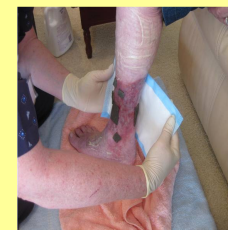
Dispose of gloves and perform hand hygiene⁴



Put on non-sterile gloves^{6,7}



Cleanse the wound⁸ using a non touch technique. If using a container ensure it is cleaned thoroughly before and after use



Dress the wound using a non touch technique²



Dispose of gloves and waste⁹. Perform hand hygiene⁴

Complete Procedure



Clean the work space and equipment



Perform hand hygiene⁴

Good practice points (GPP):

1. Always ensure a wound care plan has been completed. Check before commencing care and update as required at the end of care.
2. If asepsis cannot be maintained using Standard ANTT, use Surgical ANTT (incorporating a critical aseptic field and sterile gloves).
3. Dressings should be stored off the floor, in a sealable, rigid walled container to protect key parts.
4. Hand hygiene may be performed using soap and water or a waterless product.
5. Scissors are single client use. Scissors used to cut dressings should be cleaned before use.
6. Use a non touch technique at all times to protect key parts and key sites. If it is absolutely necessary to touch the wound or key parts directly, use sterile gloves. Determine if further PPE is required if there is a potential for splash of blood or body substances.
7. If you have commenced care and you require more equipment, remove gloves, perform hand hygiene, gather equipment, clean hands and put on clean gloves to recommence care.
8. Wounds can be cleansed with running water and if clinically appropriate, the wound itself can be cleansed again with sterile water or saline. Untreated tank water should not be used.
9. Waste must be disposed of as per your agency policy.